



# St Luke's News

February 2023

Number 272

## Providential Saviour: Problem Solver



Remember Macgyver? For the uninitiated it was a television show that ran from the mid 80s to the early 90s (and has I believe been resurrected more recently). The title character and protagonist was called Angus or 'Mac' and was the original 'Mr Fix It'.

If we could somehow combine the skills of Paul, Larry, John and Tim (the St Luke's Fix-It team) into one exceptional individual, you would probably find they would be able to solve even the most complex of church problems in a couple of hours and would not even need the scaffolding! But this person would still fall short of the genius-level intellect, proficiency in multiple languages, superb engineering skills, excellent knowledge of applied physics, military training in bomb disposal techniques, and preference for non-lethal resolutions to conflicts that typified the Macgyver of my youth. As a pre-teen fascinated by how things worked this was inspirational stuff.

I have also always been excited by the fact that Jesus was a carpenter. In *Mark 6* and *Matthew 13* he is recognised as such by others in his home town. He would have almost certainly have spent his early life following in his father's footsteps and learning his father's trade. I've often imagined the joy on his face as he revelled in the smell of freshly cut lumber, or split open a tree trunk and became the first person ever to witness the unique pattern of grain.

But I wonder now if that image is really truthful, as firstly wood was, as it still is, in short supply in that area of the world. There are also questions over the Greek translation of the word 'tekton', as some suggest it might more accurately be read as builder, labourer or contractor. As the majority of houses at the time in the locality were constructed from stone, might Christ have been a stone mason, his hands gnarled from chiselling local limestone and roughened by constructing mud brick walls to sit on the foundations? It certainly throws Jesus' comments about building his church (*Matthew 16:18*), and the longevity of earthly temples (*Mark 13:1-2*) into a different light.

Others suggest a better interpretation might be artisan, contractor, or handyman. This might suggest that should you have needed something fixing, be it made of wood or stone, 'Joseph and Son' might have been the company to call on. Maybe by today's understanding, Jesus might have been something like an engineer.

Whilst, as a woodworker, I am disappointed that the carpentry angle might not be entirely accurate, Christ's original trade has no bearing on his work as Saviour of the world. But the other ideas do add fresh richness and excitement to the metaphors Jesus often used to disciple his followers. He frequently references construction through cornerstone, capstones and solid foundations, details that might suggest Jesus was indeed familiar with how to plan, finance, lay, and build a house – the idea of him being the ultimate problem-solver, someone who draws alongside us in the midst of life's difficulties, who works within and through us. It also makes a fantastic picture that brings verses concerning his provision (*Mark 7:7*) and his guiding promises (*John 14:6*) into sharper focus. He proved himself capable of erudite judgements, to have dominion over danger and disorder, be able to subjugate disease, send demons darting, and ultimately to defeat death. Now 80s' TV had nothing on that!

Ultimately, whatever his profession, the important thing is that Jesus' master craftsman hands had the ability then, as they still do today, to skilfully mould and shape each of us into his own likeness, for his glory. And he has the ability to take the rag-tag bunch of sinners at St Luke's and intricately fit each of us together, rounding off our rough edges, into a spiritual temple built to bring glory to God. Whilst Angus may have been a formational influence many years ago, it is certainly Christ that I look up to these days, as the ultimate 'Macgyver' for my soul!

**Neil Brookes**  
**Youth Director**

## Services at St Luke's

### Sunday

#### 8:00am Holy Communion Service

This is a said Communion and is held once a month in the chapel at St Luke's. All are welcome.

#### 10:30am Morning Service/Communion Service

This is our main morning service, and is currently available live-streamed on YouTube. All are welcome, and there are usually children's groups and a crèche for younger ones. The details in the calendar below may change.

#### 5:30pm Encounter - Informal Evening Service

This service includes worship, a talk and opportunities to be prayed for. There are activities for children and young people.

### Tuesday

#### 10:00am Holy Communion Service

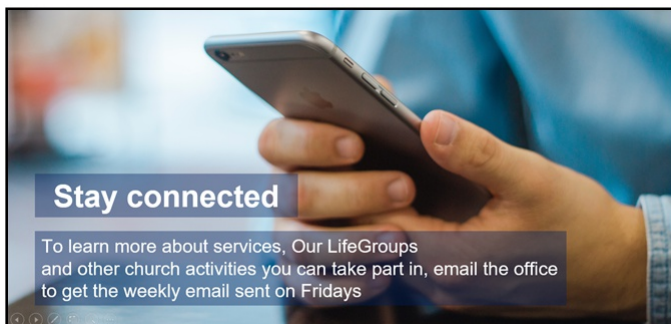
We also have a weekly Communion (or Service of the Word if the Vicar is unavailable) at 10:00am on Tuesdays. This is a lovely, reflective service with a couple of hymns, followed by community tea and coffee.

| February           | 8:30am         | 10:30am   | 5:30pm  |
|--------------------|----------------|---|---|
| <b>Sunday 5th</b>  |                | A blast from the past<br><i>Genesis 42</i>                      | <i>The Holy Spirit</i> who brings unity under the Word of God           |
| <b>Sunday 12th</b> | Holy Communion | Revenge and bargaining<br><i>Genesis 43 and 44</i>              | <i>The Holy Spirit</i> who distributes gifts to the people of God       |
| <b>Sunday 19th</b> |                | The great reveal/The happy ending<br><i>Genesis 45 and 46</i>   | <i>The Holy Spirit</i> who empowers us for witness                      |
| <b>Sunday 26th</b> |                | Fasting, time with God and into battle<br><i>Matthew 4:1-11</i> | <i>The Holy Spirit</i> , the bringer of truth, wisdom and understanding |

The sermon titles may change at the discretion of the preacher.

| March              | 8:30am         | 10:30am   | 5:30pm   |
|--------------------|----------------|---|--|
| <b>Sunday 5th</b>  |                | A spiritual new birth<br><i>John 3:1-17</i>                   | <i>The Holy Spirit</i> , the one who comes alongside us                          |
| <b>Sunday 12th</b> | Holy Communion | A transformed woman and her witness<br><i>John 4:5-42</i>     | How can I be filled with the Holy Spirit?<br>The Holy Spirit in the book of Acts |
| <b>Sunday 19th</b> |                | The gift of mothering (Mother's Day)<br><i>John 19:25b-27</i> | Experiencing the filling of the Holy Spirit                                      |
| <b>Sunday 26th</b> |                | A transformed corpse!<br><i>John 11:1-45</i>                  | The Holy Spirit releasing us in praise and encountering God's glory              |
| April              | 8:30am         | 10:30am   | 5:30pm   |
| <b>Sunday 2nd</b>  |                | A city rejoicing! (Palm Sunday)<br><i>Matthew 21:1-11</i>     | <i>The Holy Spirit</i> with us in the difficult times                            |
| <b>Sunday 9th</b>  | Holy Communion | Easter Sunday   | Resurrection life brought to us today  |

The sermon titles may change at the discretion of the preacher.



## Lent – Transformation



This year, Lent covers the period from 22nd February until 8th April.

At the 10:30am service our sermon series will have an overall title of 'Transformation'.

As we travel through March, nature transforms from a winter state to the beginning of Spring. Spiritually, Lent is a time to be transformed, to come close to God, to be renewed and refreshed in our faith.

This year the Gospel lectionary readings are mainly from John's Gospel and fit very much the theme of transformation. The readings and likely themes of each week are listed on pages 3 and 4.

### Discovering the Third Person of the Holy Trinity: The Holy Spirit

A second term of our new 5:30pm service, 'Encounter', started on the 8th January. It's an informal service with a time of worship, bible reading, and sermon with an opportunity for prayer ministry. A group of young people aged 9–17, meets during part of the service and afterwards enjoy pizza, tea and coffee. This term (up to Easter) we are looking at the person and work of the Holy Spirit and how to be filled with the Holy Spirit. As we enter February; we will be looking at, and by God's grace experiencing, the works of the Holy Spirit in various aspects of our own lives and in the Church community.

Please see pages 3 and 4 for the topics we will be covering.

It should be a very positive time as we experience the new life our Lord Jesus brings by sending the Holy Spirit to us.

***Yours in Christ  
Michael  
Vicar of St Luke's***



## Diary dates coming up

### February

|                     |   |
|---------------------|---|
| 3rd                 | World Day of Prayer Bible Study                     |
| 4th and 18th        | Breakfast Club                                      |
| 11th                | Family Quiz Night organised by the Llewellyn family |
| 21st                | Pancake Party                                       |
| 22nd                | Ash Wednesday Service, 7:30pm                       |
| 27th Feb–12th March | Fairtrade Fortnight                                 |

### March

|              |                      |
|--------------|----------------------|
| 4th          | World Day of Prayer  |
| 4th and 18th | Breakfast Club       |
| 10th         | Cameo                |
| 11th         | Fairtrade Quiz Night |

### April

|              |  |
|--------------|--|
| 1st and 15th | Breakfast Club                         |
| 14th         | Cameo                                  |
| 23rd         | Annual Parochial Church Meeting (APCM) |



## Prayer

### FOCUS 8pm Tues

Zoom (Chapel 2<sup>nd</sup> Tues of the month)

### Prayer for Children & Youth

Thursdays during term time  
3pm in the Chapel

### Hour of Prayer

Fridays 10am in the Chapel

## Regular groups at St Luke's

### **Children/Youth Groups (evenings, term-time)**

|              |            |             |                 |
|--------------|------------|-------------|-----------------|
| Urban Saints | Tuesdays   | 6:15–7:30pm | 7–11 year olds  |
| Base         | Thursdays  | 6:15–7:30pm | 11–14 year olds |
| K2           | Tuesdays   | 7:45–9:00pm | 12–15 year olds |
| RISE         | Thursdays* | 7:45–9:00pm | 14–18 year olds |

\* Meeting intermittently so check with Neil and Lydia for dates

### **Toddlers (term-time)**

Thursday mornings, 9:30–11:00am

### **Breakfast Club**

1st and 3rd Saturdays of the month, 8:30–10:00am

For more information, speak to Lydia

### **Cassiobury and Nearby Community Choir**

Wednesday evenings, term-time, 8:00pm in the church

For more information, speak to Jeremy C

### **Come And Meet Each Other (Cameo)**

Friday evenings, monthly (usually 2nd Friday of the month)

For a programme, speak to Jos or Pam W

### **Friday Club**

Monthly, last Friday in the month

For more information, speak to Janet G

### **Creative Space**

Craft activities for women, monthly

For more information, speak to Pam N

### **Knitting Group**

Monthly on a Monday morning

For more information, contact Di via the church office

### **Prayer**

FOCUS, Tuesdays, 8:00pm: every 2nd Tuesday of the month meet in the chapel, all other Tuesdays meet on Zoom (for log-in details, contact the church office)

Prayer for Children & Youth, term-time, Thursdays, 3:00pm

Hour of Prayer, Fridays, 10:00–11:00 am

## The Effects of Climate Change on World Coffee Harvests

Climate changes such as drought, higher temperatures, erratic rainfall and floods are causing damage to coffee plants worldwide. There are two main coffee varieties, 'Robusta', used to make instant coffee, and 'Arabica', which constitutes about 70% of world coffee production.



In **Central America**, a significant coffee-producing area, an outbreak of a disease called "leaf rust", which is also endemic in **Africa**, is linked to the climate becoming wetter and warmer at altitude. It has severely damaged coffee crops. **Peruvian** coffee farmers' plantations at high altitude in the Andes are having to change to growing tea, which is more resilient at warmer temperatures, but not so profitable. A prolonged period of drought and some unseasonably cold weather in **Vietnam**, the world's second biggest coffee producer, has cut back crop forecasts for 'Robusta' beans.

Climate-related events in **Brazil**, the world's biggest coffee grower responsible for about 40% of global production, are causing major problems. Last year only 10% of usual rainfall in south-eastern Brazil accompanied by unusually high temperatures caused much-reduced coffee harvests.

### Climate change also threatens African coffee production

The future for coffee is gloomy. About 60% of wild coffee strains worldwide are in danger of extinction, according to a study by the US journal Science Advances. About 170 million bags (each of 60kg) of coffee are produced annually according to the International Coffee Organization. Coffee farmers like Mercy Njambi in **Kenya** have long experienced a worrying downward trend.

"We used to produce a lot of coffee," she said pointing to the red coffee cherries dotting the plants on her farm in Muranga County in central Kenya. "What we are harvesting now is nothing compared to 10 or 20 years ago."



**Fairtrade coffee production** is affected by climate change and will seriously affect sustainability of coffee co-operatives in Africa, Asia and Latin America.

**These co-operatives need our support by buying their products. Choose Fairtrade if you can!**



*Brian Mee*

*Watford Fairtrade Town Steering Group*

## Fairtrade Fortnight

### **Fairtrade Fortnight is coming: Mon 27 February to Sun 12 March!**

Several events are planned and all are invited to join in:

- **Sun 26 Feb, 5:30 pm** evening service, St Mary's Church: Albert Tucker, Fairtrade Champion, will speak about *Climate change and its effect on the Fairtrade system*.
- West Herts College Training Restaurant  
**Fri 3 March, 12 noon**, Fairtrade lunch, £10  
**Tues 7 March, 6:15pm**, Fairtrade dinner, £18 including Fairtrade wine  
Call 01923 812464 to book. Menus will be published nearer the time.
- **Sat 4 March, 10:00am to 4:00pm**, Atria Watford shopping centre: Fairtrade Awareness-raising Stand
- **Sat 11 March, 7:15 for 7:30pm**, St Luke's Church, Quiz Night. See next page for more information.

***Choose the World You Want  
by buying Fairtrade products whenever you can!***



## Fairtrade Quiz Night

### **Saturday 11th March** **St Luke's Church Hall**

Doors open at 7:15pm for a 7:30pm start

Tickets cost £5 per person  
Up to 6 people per team

Quiz Master will be Graham Hall

Please bring your own refreshments  
There will be a raffle and Fairtrade prizes

For tickets please contact  
Fran Davies at [Ofrandavies@gmail.com](mailto:Ofrandavies@gmail.com) (zeroofrandavies)

or by message on 07909 904872

Quiz Night proceeds support the work of the Watford Fairtrade Town Group



## **PANCAKE PARTY!**

**TUES 21<sup>st</sup> FEB**

from

**5:15 – 8:30pm**

in the gathering area

**Everyone welcome!**

## World Day of Prayer

The World Day of Prayer is a women-led service prepared this year by Christian women from Taiwan. The Day of Prayer will be observed in over 70 countries throughout the world. In 2024, the service will be written by Christian women in Palestine.

The theme of this year's service is **Encouragement**.

The Bible passage about the theme of Encouragement  
is in *Ephesians 1:15–19*

We will be studying it together at **St Luke's Church**,  
led by Mrs Pam Norman  
**at 2pm on Friday 3rd February 2023**

The Watford World Day of Prayer service  
will be held here at **St Luke's Church**  
**at 2pm on Friday 3rd March 2023**  
*"I have heard about your faith"*

All are welcome at both meetings, men and women of any Christian denomination in the Watford area. Please contact me if you would like to be part of our welcoming team.

**Mary Bowen**



If you would like to give to St Luke's by bank transfer, the details are as follows:

Account name PCC St Luke's Watford

Sort code 20-91-79

Account no. 70687472

Reference Please state if the donation is for a specific appeal,  
eg Santa's hampers, Foodbank, etc.

**Please remember to complete a Gift Aid form if you are a tax payer**

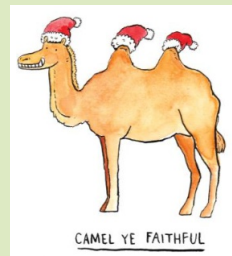
## One Hump or Two?

In our Epiphany-themed service on New Year's Day I raised the important question of how many humps did the Wise Men's camels have? The question was asked in the context of the two main theories about the origins of the Wise Men, or the Magi. The traditional belief has been that they were probably astronomers or astrologers from Central Asia, perhaps priests in the Zoroastrianism religion of Persia (the word 'Magi' is of Persian origin) who studied the stars and looked for signs in the night sky that could be linked to prophecies about world events.

There is a similarly long-standing belief that the Wise Men came from the Arabian peninsula – for several reasons. Firstly frankincense and myrrh are harvested from trees only found in southern Arabia, and Arabia was also famous for its gold mines. Secondly, there are several references in the Old Testament to visitors from Sheba (the old name for Arabia) bringing gold and spices as gifts, starting with the Queen of Sheba visiting Solomon in *1 Kings:10*, and then prophecies in *Psalms 72* and *Isaiah 60* that kings and rulers would bring gold and incense to pay homage to Solomon or to Jerusalem, both of which can be taken as representing the Messiah.

We will never know which of these theories is the correct one, but the zoologically literate reader will have already worked out that the origin of the Wise Men would have dictated the type of camel they travelled on to Jerusalem. The beast of burden of choice in Central Asia would have been the two hump Bactrian camel with its thick warm coat, ideally suited to navigating the steppes of Central Asia. In Arabia however the choice of the traveller would undoubtedly have been the one hump camel or Dromedary, ideally equipped to cope with the sand and heat of the Arabian desert.

I have rarely seen a two-hump camel in representations of the Wise Men in Biblical art, in nativity sets, or on Christmas cards. I therefore challenged the congregation to seek out any examples they could find of Bactrian camels amongst their Christmas cards this year. John Sills sent me the image opposite. And Lydia sent me a photo (see next page) of her family's nativity set, containing an unmistakeable two-hump camel!



The challenge is still open! If you can find any further images then I would be pleased to see them.

Is there a spiritual point to this? Well my mission was to stimulate interest in the journey of the Magi, and in the significance of their visit and the gifts they brought to the Christmas story. Everything in the Bible is there for a reason, and we need to understand what the Wise Men symbolize, and to fully understand this we need to look more closely into their origins. Are they a fulfilment of Old Testament prophecies? Or are they supposed to represent the mystical East paying homage to the Christ child and to this new religion that would supersede their ancient beliefs?



The twist is of course there's no evidence that the Magi travelled by camel at all. Centuries later Genghis Khan invaded Europe from Central Asia on horseback, so perhaps the answer to my question is that no humps at all were involved in the Christmas story! A Nativity without a camel? Personally, I would find that more than a little sad.

**Bill Miller**

## **Urgent plea from the Food Bank**

We're low on donations at the moment, especially these items:

- Longlife milk
- Jars of jam
- Tinned fish
- Tinned vegetables
- Longlife sponge puddings
- Tinned meat

If you can, please consider adding a few extra items to your weekly shop to donate to the Food Bank. We have collection points at Asda, Tesco Extra and both Sainsbury's. Thank you!

**There is also a collection basket in the Gathering Area at St Luke's**



Date: 15 Jan. 2023

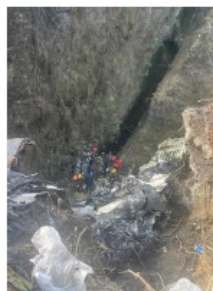


Dear All

We are shocked and saddened by the news of plane crash of Yeti Airlines flying from Kathmandu to Pokhara at 10:50 am on Sunday 15 January 2023 at Pokhara- 15 Nayagaun in the Seti River gorge nearby INF Nepal Green Pastures Hospital and old Airport site in Pokhara. 72 people were on board, including 4 crew members, 69 bodies have been found so far and confirmed dead. As the accident area was close by INF Green Pastures Hospital, INF Nepal was one of the first organization to be at the accident spot and started responding. Fifteen members of our Disaster & Medical Response Team with INF's Ambulance was mobilized in the accident spot and first two injured passengers were carried to the Western Regional Hospital by our Ambulance but unfortunately, they could not survive. INF's Team also supported with logistics, medical and other essential supports to the Government Rescue Team throughout the day. The rescue work will continue to search the remaining bodies tomorrow.

So far none of the passengers of the doomed plane were from INF Nepal though it created some confusion initially as two listed passengers were named **INF** which in short form in aviation sector meant **Infant without a seat**. However, some of the victims are known to INF and the Pokhara Christian community. Please uplift the bereaved families and friends and those involved in the recovery and operations in your prayers. May God Almighty console the victims' families and grant Peace. Thank you for standing with us in this hour of grief.

#### INF's Response Photos:



## News from some of our Mission Partners

Our dear friends,

By now, you will have heard news of the tragic plane crash, practically in INF's 'back yard' in Pokhara. A team from Green Pastures Hospital were some of the first responders, but it's unclear whether anyone has survived.

Please see a brief INF update left.

Sad stories are starting to emerge... the neighbour of one of our friends, the Gurkha Welfare doctor who attended palliative care training at INF last week, the person we knew who was an amazing worship leader (and radio broadcaster) in one of the local churches – he's described as: "One of the most influential youth leaders among the Christian youth impacting so many people through radio broadcasting and music audio and video creation business".

Only God can bring light into the darkness that so many will be experiencing – please pray for all those who are affected. Pray also for INF staff and expats who frequently fly that route and could so easily have been on board.

***Thank you and God bless,  
Clive & Andrea***



*'And I heard a loud voice from the throne saying, "Look! God's dwelling place is now among the people, and he will dwell with them. They will be his people, and God himself will be with them and be their God. 'He will wipe every tear from their eyes. There will be no more death' or mourning or crying or pain, for the old order of things has passed away."*

Revelation 21:3-4

We have just come back from the Friends International annual conference, where Friends International staff, affiliates, Reach trainees, trustees, and Branch members are able to meet to



encourage each other and learn together. Our Bible talks this year were on Revelation and it was such an encouragement to be reminded of the big picture of our ministry to international students. The hope that we are holding out to these students is a lasting one, of a world where there will not be pain and brokenness because God himself will be at the centre. As so many of our students struggle with the things that are broken in our world now, what a great privilege it is to be able to share the good news of Jesus and how they can become part of that certain future. Please do join us in praying that many students this term would hear that good news and come to trust God for themselves!

- **Please pray for our events this term.** Please pray for many students to come to them and for good conversations between volunteers and students.
- **Please give thanks for the time we spent at the Friends International January conference.** Please give thanks for the ideas that were shared and pray that we would be able to put many of the things we learned into practice. Please continue to pray for our colleagues around the country, particularly for those who are the sole staff worker in their city.
- **Please pray for our Conversation Café launched at the end of January.** Please pray that we would publicise it well and that there would be an excitement amongst students to come along to it.

*Sally Miller*

*Friends International, Lancaster Branch*



**Ruth Guinness**

Malawi  
[www.sim.org](http://www.sim.org)  
+265 984 425 575

Dear friends,

Warm greetings from Blantyre, Malawi.

I received photos from home this morning of flooded fields in Wareham. It's wet here too – we're in the middle of the rainy season, with rain every day, but thankfully we also quite often see some sunshine. The more it rains, the worse the dirt road to Michiru, the local nature conservation area, gets. However, I've managed to get there weekly so far this year and have been blessed by the beautiful



scenery, abundant vegetation springing up because of the rains, and the many beautiful creatures – bird, butterfly, bug and beetle!

I wonder how 2023 has started for you? Last week I was able to take time both to prayerfully review the last year and to pray and plan for the coming year. I'm reading through Hosea, and have been both encouraged and challenged by it. Chapter 6 verse 3 is a good verse to take into the year:

*"Let us acknowledge the LORD, let us press on to acknowledge him. As surely as the sun rises, he will appear; he will come to us like the winter rains, like the spring rains that water the earth."*

I've now been in my international role as the Ministry Point Person for Theological and Missiological Education for a year. It was a year of building foundations, and I plan to build on that this year. One challenge is to create some structure to my days. This is not always easy when Zoom calls can be at any time but I do work more easily with some routine. It will be really good to go to SIM's Global Assembly at the end of February. This will be held in Kenya, and will be a gathering of many leaders within SIM. I'm looking forward to many stimulating conversations.

I would like to continue to meet with the Principal and Academic Dean of the Evangelical Bible College of Malawi (EBCoM) but it depends also on their willingness and availability. Yesterday there were several EBCoM students at the local Africa Evangelical Church that I attend, Chilomoni. It was good to see their contribution to discussion in a teaching session. I'm praying about my involvement at the church and hope to be able to do some teaching there this year.

I had quite a quiet Christmas here. It was good to meet with friends, including a German Christian on Christmas Eve and a British one on Christmas Day! Thank you for praying for my bad back – it affected me for several weeks but I'm glad to say that I'm better now.

### **Summary of prayer points**

- Give thanks for time with friends at Christmas and over the New Year
- Give thanks for the healing of my back
- Pray that I'll be able to work effectively as I build more structure into my week
- Pray that I will walk closely with the Lord and allow all I do to be guided by him
- Pray for preparation for SIM's Global Assembly in February

Thank you so much for your prayerful support. Do let me know how I can pray for you too.

With love in Christ,

**Ruth Guinness**

***ruth.guinness@sim.org***  
***P.O. Box 136 Blantyre, Malawi***

### **Kisumu Children (KC) Annual Review**



The Annual Review, held at St Luke's on 8th October 2022, was well attended by members of St Luke's and KC supporters. Mike Dare, for KC, reported that the Covid-19 pandemic had seriously affected the charity's work, closing all schools in May 2020 and seriously impacting our children. The children returned to their rural homes, many in serious poverty, not returning to school until January 2021. Meanwhile, the Kenyan government mandated a reform to change not only the curriculum but also to implement a 4-term year (with shorter holidays) on the return to school to allow catch-up on education. The children rose to the occasion and did very well in their exams.

Meanwhile, more change was in store. The government revised the period of education from 8 years Primary and 4 years Secondary to 6 years Primary, 3 years Junior Secondary and 3 years Senior Secondary. Mike pointed out that secondary education can be too academic for many, so previously more practical youngsters had moved into vocational training. Being made to stay in secondary education may be unattainable for some, either financially or academically.

Alternative Family Care (UNICEF) was implemented in January 2021. A new law states that children have to be cared for at home by parents or relatives. So, on arrival at KC and return to our local Tiengre Primary School in January 2021, the children had once more to return home. KC had been chosen as a pilot scheme to return children to their rural homes as, in principle, children are better off 'at home'.

However, so many live in such basic homes where one more mouth to feed is too much. 15 schools are now visited by KC staff to check on these KC youngsters. Food parcels have been delivered to many needy families. KC has also developed a feeding programme and about 100 children arrive daily for lunch, which is often their only meal of the day.

In recent times, the Home has lost two mentors: Bishop Francis and Pat Botright. Bishop Francis, a Kenyan Patron, was an encourager to many. He opened our new building and advised our now ordained minister/Manager, Philemon. Philemon had taught at Pat Botright's Children's Home and it was Pat who had offered him the opportunity to run our Home 20 years ago as, 'you can trust him!' Mike called Pat a 'trail blazer!' Pat sadly died 3 years ago in Kisumu ... just where she wanted to be. She was a great advisor and a good friend.

The Home is largely empty except for a few children. However, it's open for emergency cover for children found by the local Children's Department. Much prayer and thoughts are ongoing for the future of the Home but in the meantime IT lessons are given in the holidays by a tutor. Manase, the Deputy Manager with the Children's department staff, has run a Forum for practical support to parents (39) in the community, where dear little Boaz with cerebral palsy lives.

Fundraising has given Boaz a new wheelchair and other equipment to improve his quality of life. Help is also being given in the community for families with special needs – Manase again is holding monthly Forums at the Home with community carers (20) with their special needs children who come for lunch, support and sharing, especially from Boaz's Mum!

Following Mike's report, we received the financial report from Peter Brierley, Deputy Chair, and updates were given by other Trustees about fundraising and the continued need to find sponsors for all our children, whatever educational level reached to date.

For offers of sponsorship, email Lynn: [office@kisumuchildren.org.uk](mailto:office@kisumuchildren.org.uk)

***Jos Lawrance on behalf of PIM***



Dear All,

Happy New Year!

Thank you so much for praying for us and in particular for praying for all of our Christmas events. We are currently on holiday in Tokyo and from 23rd January will join the Pre-Home Assignment Workshop training course for two weeks. Therefore, we won't send out a full prayer letter this time. We would really appreciate your prayers for the following:

- Praise God for an encouraging time at our Candle-lit Carol and Christmas Day services. Please pray that everyone who heard the gospel at the events and services over Christmas will turn to Jesus and be saved.
- We are thankful for Sarah's parents arriving safely and for the holiday we are enjoying with them now. Please pray for our time together.
- Our Home Assignment dates are now set for mid-July to mid-November this year. Please pray that all the preparations for coming to the UK will go smoothly and that we have a refreshing and encouraging time later in the year visiting family, connecting with churches and resting.

Thank you so much and God bless you,

***Mark, Sarah, Grace, Isaac and Caleb xxx  
OMF, Japan***

The Gelsthorpes are working for OMF leading a church plant in rural, northern Japan.

Matsuzono Cho 1-11-40, Hanamaki Shi, Iwate Ken, Japan 025-0066  
mark.gelsthorpe@omfmail.com  
sarah.gelsthorpe@omfmail.com

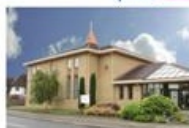
## Creative space for hard-working women



Come together for continental breakfast (Sats), drinks and cake (Mon), a short talk and then spend time enjoying learning a new craft.

### Creative space

venue



**St Luke's  
Church**  
Langley Way  
Watford  
WD17 3EG

- learn a new craft skill
- chat with friends

Places are limited

Please book yours by contacting Pam:  
07975 748243 or [pam.stlukes@gmail.com](mailto:pam.stlukes@gmail.com)

[www.stlukeswatford.org/creative-space](http://www.stlukeswatford.org/creative-space)

## A Prayer for Ukraine

God of Peace and Justice, we pray  
for the people of Ukraine today.

We pray for peace and the laying down  
of weapons.

We pray for all those who fear tomorrow,  
that your Spirit of comfort  
would draw near to them.

## Alpha Course, Autumn 2022

A very successful and enjoyable Alpha course took place in the Autumn at St Luke's here in Watford. The course was conducted by Wendy, together with Dave Clarke, Reader at St Luke's, and was well attended by some 10 'students'!

Wendy was ably assisted by her team of volunteers who helped with the welcome and the preparation of a good meal every Wednesday evening, with the Vicar, Michael Norman, also in attendance to welcome and join us for dinner.

The 10-week course went from September through to December, with an 'Away-Day' on Saturday November 12th at Latimer Park, near Chenies and Chesham, when we were blessed with some late autumn sunshine.

At a time when according to a recent media report, our country has been found to be no longer a Christian country for the first time in 1,500 years, we can all take pride, comfort, and encouragement, that a small group of 'believers' have taken the time and effort to come together, to study the Bible's teaching, to learn to pray, to share each other's Christian experiences, and to enjoy each other's fellowship.

As William Shakespeare once wrote in *Henry V*:

*"Once more unto the breach, dear friends, once more; ..."*

*"We few, we happy few, we band of brothers, ..."*

We returned for a reunion and our 'Graduation' on Wednesday January 11th, enjoying another meal together, and were offered the opportunity to attend an Alpha follow-up group, together with an occasional newsletter from Wendy and Dave to help us keep in touch.

We would like to take this opportunity to record our very deep appreciation for all the preparation, hard work and effort from Wendy and Dave, together with their volunteer helpers during those happy, memorable, and blessed Wednesday evenings.

**Johnson Wong**

Got questions about faith? – Ask at Alpha



## Cassiobury and nearby Community Choir

Who would have thought that singing was SUCH FUN? The Cassiobury and nearby Community Choir (CanCC) started up in order to celebrate the Queen's Platinum Jubilee in June last year. We started with about 8 people and have grown to over 20! Under the Jeremys' (Cooke and Hogarth) instruction, inspiration and amazing keyboard skills, we have learned a myriad of music.



Songs focusing on the Queen with some of her Majesty's favourites were sung at our first Essex Arms event and the St Luke's Jubilee Party. Then we fancied we'd try some catchy numbers from musicals, which culminated in a concert of *Songs from the Musicals* and included songs from *Joseph and the Amazing Technicolour Dreamcoat*. We had a night out together at Milton Keynes Theatre to watch their production – an enjoyable evening of research!

Recently, our Christmas carols at the Essex Arms were very warmly received.

The Old Testament story of Joseph has now become a New Year theme at the 10:30am service and some of the choir introduce the service each week with a song or two from the musical.

Next, we look towards another royal event, and a concert of Gospel music.

We meet each Wednesday at 8:00pm in the church. There is no audition or need to read music, so if you want to have a Wednesday singsong with friendly people which will pleasantly punctuate your week with an enjoyable evening of fun, music and friendship, come and try us out.

Roll on tremendous tunes for 2023!

**Pam Norman**

## Tearfund's The Big Quiz Night

We have been taking part in Tearfund's **The Big Quiz Night** for 5 years now!

We enjoy getting together as a church family for a good meal with lots of fun, a quiz, and the knowledge that others are doing the same all over the UK. Being part of Tearfund's Big Quiz Night means we can do our part to help communities and churches worldwide end extreme poverty and injustice. Quizmasters this year included actress, Tamsin Greig, and England rugby star, Billy Vunipola. Competition was intense and Slice of Pi won for the second year running by one single point!



On 19th November, 66 of us joined 13,421 people and 335 churches and contributed £756 towards the total sum raised of over £140,000.

The money raised will transform the lives of people like Zuleima, a mother of three from Venezuela which is a country struggling beneath the weight of a massive economic crisis. Zuleima would have to queue for up to two days to get into a supermarket – only to find there was no food left when she got in. She fled to Colombia where life was difficult at first with few job opportunities and then the pandemic hit. The refugee population faced a humanitarian crisis, with no way to meet their basic needs. The church changed everything. “The church opened their doors, and they helped me,” says Zuleima. “Not only giving me food and a place to live, but also taking care of my emotions, giving me words of faith.”



As well as providing support for refugees' immediate needs, Tearfund's local church partners have been setting up support groups that help people like Zuleima find new income opportunities. Zuleima has started a business, making items out of driftwood, and was able to take out a loan to purchase a table saw.

**Look out for the next Big Quiz Night in November 2023!**

*Susan Miller*



## Christmas Pudding Stir-up!

When do you allow yourself to start getting excited about Christmas? Do you wait until the first advent door or candle on the wreath? Do you need to hear Mariah Carey or Michael Bublé?



As a child, I loved Stir-up Sunday. My Grandma, who we called Dodie, would arrive with her huge ceramic mixing bowl, and trays of mixed fruit which she'd spent the week picking over to remove stray stalks.

The alchemy of the perfect Christmas pud was full of mystery and wonder. Similarly, the smells of Christmas are so evocative. The opening of a can of stout (always Mackeson's for Dodie) or the subsequent steaming always takes me straight back to that kitchen. We were not allowed to help. But always brought in for the traditional stir and wish. I think the anticipatory wait to taste your hard work adds to the joy of the Christmas pudding on Christmas Day.

Following in the legacy left by Caryl and Phil Boxhall, Fran, Mark, Beth, Lydia and I set up our second pudding event at St Luke's. This year, more than 80 puds were made during three sessions on 17th November.

What was so lovely to see, was the age range of people making the puddings. From seasoned experts to young children, grandparents to youth group members, and groups of colleagues coming on an invitation from a friend or neighbour. There was a lovely buzz in the hall; chatter, laughter and Christmas tunes mingled in the air, with a backdrop of weighing, chopping, grating and the satisfying squelch of the final stir and wish.

As the attendees sat down on Christmas Day and enjoyed their pudding, I hope that they too have built core memories and an expectation, that this will start to mark the beginning of the Christmas season.

Many thanks to the team for all the admin, egg hunting and the all important Christmas play list!

***Kate-Dorsett-Bailey***

## LADIES CAMEO CLUB

### Spring 2023 Programme

#### February

|   |   |                                   |
|---|---|-----------------------------------|
| Friday 10th<br>7 for 7:30pm<br>Upper Hall | <b>'In the steps of Jesus'</b><br>An Israel experience<br>Cameo + event | Presentation by<br>Michael Norman |
|---|---|-----------------------------------|

#### March

|   |  |                                    |
|---|--|------------------------------------|
| Friday 10th<br>7 for 7:30pm<br>Upper Hall | <b>RNLI</b><br>Royal National Lifeboat<br>Institution<br>Cameo + event | Community presenter<br>Colin Baker |
|---|--|------------------------------------|

#### April

|  |   |                     |
|--|---|---------------------|
| Friday 14th<br>7 for 7:30pm<br>Church Lounge | <b>Film night: <i>Quartet</i></b><br>Starring Maggie Smith<br>and Pauline Collins | includes choc ices! |
|--|---|---------------------|

#### May

|  |   |  |
|--|---|--|
| Friday 5th<br>9:30am<br>Meet in car<br>park, St Luke's | <b>Trip to Dockey Wood</b><br>Coffee at Ashridge<br>Cameo + event | The bluebell walk<br>Lunch at The<br>Greyhound pub,<br>Aldbury |
|--|---|--|

#### June

|   |   |   |
|---|---|---|
| Friday 9th<br>7 for 7:30pm<br>Church Lounge | <b>Cinnamon Square</b><br>The Artisan Bakery<br>of Rickmansworth! | Entertainment by Paul<br>a multi-award winning<br>baker |
|---|---|---|

**Bring your friends and neighbours!**

For more information, email:

Jos (jocelyn\_lawrance@hotmail.com) or Pam (pamela.willis@btinternet.com)

*Cameo + events = men are welcome too*

**Donation for Club evenings - £4**

## Santa's Hampers

Once again a fabulous team of elves shopped for and put together 40 hampers for delivery to local refugee families in time for Christmas 2022.

The Santa's Hampers WhatsApp group suddenly comes alive in November, with messages going to and fro, who is buying what, where is the best price for this and that, what shall we include? The way everyone works together is remarkable but the buying of such large quantities requires a considerable amount of time and stamina.

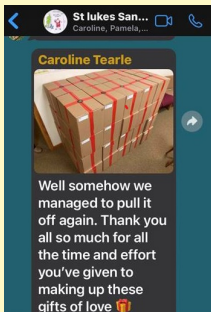
In early December a packing date is planned. Cars are unloaded, items literally spill out, which all need to be shifted to the upper rooms in readiness for packing. The team and youth groups all work together in the evening to carefully assemble the boxes, which are topped with a handwritten Christmas card, and finally signed off for delivery to the families.

The box opposite lists the items packed in each box, each item to be purchased x40. This is no small task, and we would welcome more people to join the team. It is such a joyful event to be involved in. Please contact the office if you feel you can help this year.



### Refugee Santa Hamper 2022 Packing List

|                      |  |
|----------------------|--|
| Christmas card       | Flannels                                       |
| Christmas decoration | Hot chocolate                                  |
| Note pad & pens      | Tissue pack (2x per hamper)                    |
| Biscuit box          | Jam  |
| Tub of chocolates    | Toothbrushes (2x pack of 2)                    |
| Shower gel           | Toothpastes                                    |
| Shampoo              | Tampons  |
| Vaseline             | Hairbrush                                      |
| Tinned peaches       | Assorted toys & games (matched to family size) |
| Pringle pot          |  |
| Soap pack            |  |
| Male deodorant       |  |
| Female deodorant     |  |



Finally, the WhatsApp message at the end of the evening signals completion! Such a wonderful feeling of achievement.

Thank you to all of those who so generously donated towards the purchase of the hampers. And well done to the organisers, Caroline, Tiffany, Pamela, Jos, Tony, Mitch and Tim.

**Jill Rogers**

## Wine for a Christmas Dinner

On December 10th around 30 of us gathered together to taste wines specially selected to have at a Christmas dinner.

Over a 3-hour period, 12 wines were tasted with various opinions given on the wines – some good, some bad.



We learned about the different ways of making sparkling wines and the different tastes and quality this produces. We also learned that most wines are produced to have with food and, with a Christmas dinner in mind, the wine needs careful selection due to the multitude of tastes on the plate.

For starters, 3 sparkling wines: Prosecco, Cava and Champagne were tasted with canapés.

When we came to the main course, 6 wines were tasted: Pinot Noir, a red wine from New Zealand; Pinot Noir '8' from Germany; Vouvray, a medium sweet white wine; a dry white Macon Villages from France; a white Gewürztraminer from Germany; and finally, a red Rioja from Spain. These were accompanied by a small but full Christmas dinner so that our wine tasters could experience what would and would not go with their Christmas dinner. Most wines were approved but the Macon Villages disappointed and the Rioja was felt to go better with beef rather than turkey.

The pudding wines were from Hungary, Germany and Greece. The Hungarian one was the most popular, closely followed by the Greek wine. All were tasted with sweets or blue cheese.

Thank you to all who came, and who helped with setting out and clearing up. Thanks to everyone's generosity we raised £173.50 for the Peace Hospice.

***Rev. Michael Norman***



8:30  
- 10AM

1st and 3rd  
Saturday  
Mornings

21<sup>st</sup> JAN

4<sup>th</sup> FEB

18<sup>th</sup> FEB

4<sup>th</sup> MAR

18<sup>th</sup> MAR

1<sup>st</sup> APR

15<sup>th</sup> APR

# URBAN SAINTS

7-11 Year Olds

Tuesdays 6:15 - 7:30PM

10<sup>th</sup> Jan – Boy Jesus

17<sup>th</sup> Jan – Jesus' Baptism

24<sup>th</sup> Jan – Jesus in the Wilderness

31<sup>st</sup> Jan – Jesus' Disciples

7<sup>th</sup> Feb – *No Urban Saints (for Team Training)*

*Half Term*

21<sup>st</sup> Feb – Pancake Day!

28<sup>th</sup> Feb – Jesus Feeds the 5000

7<sup>th</sup> Mar – Jesus Teaches *(Video Games!)*

14<sup>th</sup> Mar – Jesus Heals

21<sup>st</sup> Mar – Palm Sunday

28<sup>th</sup> Mar – Easter

*Easter Holidays*

The Life of Jesus



**URBAN  
SAINTS**

children@stlukeswatford.org

# Children's Page



DRAW LINES FROM EACH  
EVENT TO THE PLACE  
WHERE IT HAPPENED...

① Jesus was  
baptised

② Jesus was  
born

③ Jesus turned  
water into wine

④ Jesus ate the  
Last Supper

⑤ Jesus calmed  
a storm

Cana  
...!...

Jerusalem  
...!...

River Jordan  
...!...

Bethlehem  
...!...

Galilee  
...!...

Find the clues in:

1. Matthew 3:13-16
2. Luke 2:1-7
3. John 2:1-12
4. Matthew 26:26-30
5. Mark 4:35-41



# TODDLERS AT ST LUKE'S

15<sup>th</sup> Dec – Christmas 🎄

*Christmas break*

5<sup>th</sup> Jan – Boy Jesus 🏠

12<sup>th</sup> Jan – Joseph the Dreamer 🕸

19<sup>th</sup> Jan – Joseph the Prisoner 🔑

26<sup>th</sup> Jan – Joseph the Ruler 👑

2<sup>nd</sup> Feb – Jesus' Baptism 🕊

9<sup>th</sup> Feb – Jesus' Friends 😊

16<sup>th</sup> Feb – *No Toddlers (Half Term)*

23<sup>rd</sup> Feb – Through the Roof 🏠

2<sup>nd</sup> Mar – Children 🧒

9<sup>th</sup> Mar – The Good Shepherd 🐑

16<sup>th</sup> Mar – Saying Thanks 🙏

23<sup>rd</sup> Mar – Palm Parade 🌿

30<sup>th</sup> Mar – Easter ✝

*Easter Break*

for more information talk to Lydia  
[children@stlukeswatford.org.uk](mailto:children@stlukeswatford.org.uk)

You are welcome to submit an article for the next edition of St Luke's News which should be no more than 450 words. We may edit articles for clarity.

Please email articles to the Church Office: [office@stlukeswatford.org](mailto:office@stlukeswatford.org)

If you wish to receive St Luke's News regularly, either delivered to your door or emailed, please contact the Church Office (246161). Large print is also available. Alternatively, please let us know if you no longer wish to receive it.

The magazine appears on our website, [www.stlukeswatford.org](http://www.stlukeswatford.org)

|                               |                    |
|-------------------------------|--------------------|
| Vicar                         | Michael Norman     |
| Readers                       | Dave Clarke        |
|                               | Pam Norman         |
|                               | Wendy Somerville   |
| Ordinand                      | Tolu George        |
| Music Director                | Jeremy Cooke       |
| Youth Director                | Neil Brookes       |
| Children & Family Team Leader | Lydia Davies       |
| Administrator                 | Beth Burns         |
| Assistant Music Leader        | Jeremy Hogarth     |
| Church Wardens                | Susan Miller       |
|                               | John Williamson    |
| PCC Lay Chair                 | Richard Waddington |
| PCC Treasurer                 | Martin Kirk        |
| PCC Secretary                 | John Sills         |
| Safeguarding Officer          | Mary Bowen         |

Please leave a message for any of the above on the Church Office  
answerphone – 246161

|                |  |
|----------------|--|
| <u>Website</u> | <a href="http://www.stlukeswatford.org">www.stlukeswatford.org</a>       |
| <u>Email</u>   | <a href="mailto:office@stlukeswatford.org">office@stlukeswatford.org</a> |