



# St Luke's News

February 2024

Number 278



Image by N Brookes

If wishes really could come true, what would you wish for? What are the dreams you cling on to, through thick and thin?

The latest offering from Walt Disney Studios is a film called *Wish*. It features a young female protagonist, seven co-stars who each embody a different characteristic trait, singing and talking animals and an evil king. In many ways this self-referential style is a deliberate throwback to, and celebration of, the 62 animated films produced over the 100 years the studio has been running.

I was however struck, as I watched this film with my two small children in the cinema, by one key theme it developed. Asha, the lead character, is driven to make a wish on a star to save her home town from King Magnifico, whom she realises has dishonourable intentions. Her plot-critical wish is answered in the form of the star itself that she has wished upon, who descends from the sky as an anthropomorphic ball of light and joins her on a crusade to protect the people she loves.

At the end of the film I was left pondering the differences between dreaming, wishing and praying. On one level they might seem like three different words to describe the same sense of longing, but on careful consideration, for a Christian, they mean very different things.

The dreams we create in our minds, and often spend many years striving to make come true in our lives, are very different to Biblical dreams. There are many occasions in the Bible where God speaks through dreams. In these dreams God directs, warns or guides his followers.

More critically, however, prayer is quite different from wishing. A wish is not really directed at anyone – it's just fired into space. Prayer, on the other hand, has direction. It is aimed at God. And if we believe the Bible, God is real and understands our prayers, as he came to earth to experience everything we do on a day-to-day basis in the person of Jesus Christ. Prayer is about engaging with the creator of the universe and our heavenly Father.

There is a relationship and a purpose in prayer that takes the same hope we find in wishes and dreams and gives it a foundation of expectancy. When you pray, you can be sure your prayer has been heard, and furthermore you can be reassured it will be acted upon. *Hebrews 11:1* says ...“Faith is confidence in what we hope for and assurance about what we do not see”. So while prayer requires a measure of faith from each of us in a way that a wish does not, in turn, each time we pray our faith will be strengthened!

Interestingly, in the film the answer to Asha's wish is not at all what she expects. Many Christians, myself included, will testify to having had prayers clearly answered, but only occasionally in the way we anticipate. Prayer is bringing our petitions and requests to the one who is completely trustworthy and sovereign, and who knows ultimately what will be in our best interests. Part of the power of prayer is seeing God work in ways that surprise us and that strengthen our faith, and it is an interesting insight into answered prayer (without giving away too many spoilers) that the resolution to the wish Asha makes, is ultimately found within herself.

A key line from one of the best songs in the film speaks of deep longing: ‘Any wish that's got your heart, on the edge of breaking, is a wish worth making’. *Philippians 4:6* suggests that if you have reached the advanced state of a breaking heart, a more productive way forwards is to pray about it:

“Do not be anxious about anything, but in every situation, by prayer and petition, with thanksgiving, present your requests to God”.

So maybe next time you are tempted to take some time out to daydream, to wish on a star or a birthday candle, try addressing a prayer to God instead, and stay expectant and vigilant, and an answer will come!

**Neil Brookes**  
**Youth Director, St Luke's**

## Services at St Luke's Church

### Sunday

#### 8:00am Holy Communion Service

This is a said Communion and is held once a month in the Chapel at St Luke's. All are welcome.

#### 10:30am Morning Service/Holy Communion Service

This is our main morning service, and is currently available live-streamed on YouTube. All are welcome, and there are usually children's groups and a crèche for younger ones. The details in the calendar below may change.

#### 5:30pm Encounter - Informal Evening Service

This service includes worship, a talk and opportunities to be prayed for. There are activities for young people (ages 11+).

### Tuesday

#### 10:00am Holy Communion Service

We also have a weekly Communion (or Service of the Word if the Vicar is unavailable) at 10:00am on Tuesdays. This is a lovely, reflective service with a couple of hymns, followed by community tea and coffee.

February	8:00am	10:30am	5:30pm
<b>Sunday 11th</b>	Holy Communion	All-age Service <i>Book of Esther</i>	Encounter <i>Physical healing</i>
<b>Wednesday 14th</b> Ash Wednesday			Holy Communion 7:30pm
<b>Sunday 18th</b>		Family Communion	Encounter <i>Inner healing</i>
<b>Sunday 25th</b>		Morning Worship	Encounter with Holy Communion and anointing <i>Healing: Diagnosing deeper problems</i>

*Note: The forms of service and sermon titles may change.*

<b>March</b>	<b>8:00am</b>	<b>10:30am</b>	<b>5:30pm</b>
<b>Sunday 3rd</b>		Family Communion	Encounter <i>Healing: Ministering the Truth</i>
<b>Sunday 10th</b>	Holy Communion	All-Age Service with Wycliffe Mission Team	Encounter with Wycliffe Mission Team
<b>Sunday 17th</b>		Famiy Communion with Wycliffe Mission Team	Encounter with prayer for healing and with Wycliffe Mission Team
<b>Sunday 24th Palm Sunday</b>		Morning Worship	Encounter with Holy Communion and anointing <i>Healing: Stepping out in faith</i>
<b>Monday 25th</b>			Compline*, 7:30pm
<b>Tuesday 26th</b>		Holy Communion 10:00am	Compline*, 7:30pm
<b>Wednesday 27th</b>			Compline*, 7:30pm
<b>Thursday 28th Maundy Thursday</b>			Holy Communion 7:30pm
<b>Friday 29th Good Friday</b>		Walk of Witness 10:00am	Hour at the Cross 2:00pm Compline*, 7:30pm
<b>Sunday 31st Easter Day</b>	Holy Communion	Family Communion	Encounter
<b>April</b>	<b>8:00am</b>	<b>10:30am</b>	<b>5:30pm</b>
<b>Sunday 7th</b>		Morning Worship	Encounter

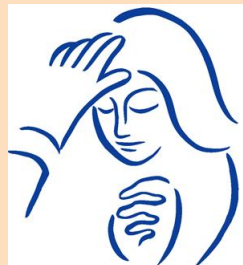
\* Compline is a short evening prayer service.

*Note:* The forms of service and sermon titles may change.



## Introducing a Sermon Series on Healing

On 24th January we began a series focused on the subject of healing at our Encounter evening services.



Throughout the 9-week series, there will be an opportunity each week to receive prayer for healing and I want to encourage any who have a need for healing, whether physically, emotionally or spiritually, to come along and receive.

Obviously, we cannot demand of God, only place ourselves in His hands and see what happens. One of the areas I want to deal with, is the area of disappointment. This is when we have prayed, and our prayers have seemingly not been answered or not been answered in the way we expected.

However, healing is a sign of God's kingdom. The Gospels are full of accounts of Jesus healing people. If God's kingdom is present, then we should be seeing some people healed and entering into the kingdom.

A few weeks ago, I had a telephone call from a lady now in her late 80s. She had been a member of St Barnabas Church on a council estate in Weston-super-Mare which I oversaw in the 1990s. She had come forward at a healing service in May 1993, had been prayed for by the ministry team, had rested under the power of the Holy Spirit and had had her migraines healed. I asked her how her migraines were, and she replied that she'd only had one migraine in over 30 years – an incredible answer to prayer. Through that healing and within about 10 days of that prayer ministry, her husband became a Christian.

The emergence of the charismatic movement in the 1960s and '70s rediscovered the ministry of healing. In the Church of England, many of us were encouraged by the ministries of Colin Urquhart, Vicar of St Hughes, Luton, at the time, and later by John Wimber, formal leader of the Vineyard movement. Revd David Watson invited John Wimber to the UK and introduced him to many who, like myself, were either training or in the Anglican ministry in the early to mid-1980s. John Wimber gave us a renewed focus on the kingdom of God, which Jesus constantly talked about in the Gospels. One of the signs of the kingdom is healing which often precedes people coming to faith as in the example I gave above.

So I am urging anyone who is unwell in any way to come along and receive prayer. I believe that healing can be instant but can also come over time. If healing doesn't happen immediately my encouragement is to keep coming, keep receiving, and it may be over time that we see healing. Healing happens in different ways and sometimes our prayers are not answered as we would like, but we place everyone into God's loving hands.

The sermon series began with an Introduction to Healing in the Old Testament and an Introduction to Healing in the New Testament. The other themes we will be covering are given in the calendar on pages 3 and 4.

The Prayer Ministry Team will be available to pray with people at all the Encounter services.

*Michael  
Vicar of St Luke's*



# Prayer

## FOCUS 8pm Tues

This week: Zoom (code in weekly email)

## Prayer for Children & Youth

Thursdays 3-4pm in the Chapel  
(during term time)

## Hour of Prayer

Fridays 10-11am in the Chapel

## Diary dates coming up

### February

9th	Cameo + Talk on Watford's Street Angels
10th & 24th	Breakfast Club
11th	Urban Saints Bake Sale after morning service in support of the Stadium Sleep Out. St Luke's Youth will be collecting sponsors
	Sunday afternoon recital, 3:00pm, Charis & Jack (violin & piano), works by Elgar, Teil & Schumann
12th	Creative Space, 7:30-9:00pm, Community Project Tree Banner and Bring & Share Craft & Chat
13th	Community Pancake Day, 5:30-9:00pm
14th	Ash Wednesday Service, 7:30pm
17th	Full performance of <i>Esther: The Play with Songs</i> , 2:30pm
18th & 25th	Bishop of St Albans Open Garden (see page 12)
23rd	Friday Club Tea Party, 2:30pm

### March

1st	World Day of Prayer at the Scroll Church (formerly North Watford Methodist), 2:00pm
	St Luke's Youth taking part in the Stadium Sleep Out 2024 to raise funds for local homelessness charities
3rd & 10th	Bishop of St Albans Open Garden (see page 12)
8th	Cameo Evening of song and chat with Andy & Cathy Coomar from Face2Face
9th & 23rd	Breakfast Club
9th-17th	Wycliffe Hall Mission
14th	Fairtrade Lunch, 12:00 noon, at Watford College
16th	Creative Space, 9:30am-noon, Portrait painting & stone painting
22nd	Friday Club Tea Party, 2:30pm
23rd	Watford Philharmonic performance of <i>Elijah</i> , 7:00pm, The Grand Hall, Bushey

### April

12th	Cameo + visit to Carpenter's Park Garden Centre
14th	Sunday afternoon recital, 3:00pm, Miranda Westcott & Mark Packwood (mezzo soprano & piano), Barber's <i>Hermit Songs</i>
20th	Fairtrade Quiz Night, St Luke's
26th	Friday Club Tea Party, 2:30pm

## Regular groups at St Luke's Church

### **Children/Youth Groups (evenings, term-time)**

Urban Saints	Tuesdays	6:15–7:30pm	7–11 year olds
Base	Thursdays	6:15–7:30pm	11–14 year olds
K2	Tuesdays	7:45–9:00pm	12–15 year olds
RISE	Thursdays*	7:45–9:00pm	14–18 year olds

\* Meeting intermittently so check with Neil and Lydia for dates

### **Breakfast Club**

Every other Saturday, 8:30–10:00am

For more information, speak to Lydia

### **Cassiobury and Nearby Community Choir**

Wednesday evenings, term-time, 8:00pm in the church

For more information, speak to Jeremy C

### **Come And Meet Each Other (Cameo)**

Friday evenings, monthly (usually 2nd Friday of the month)

For a programme, speak to Jos or Pam W

### **Creative Space**

Craft activities for women, monthly

For more information, speak to Pam N

### **Friday Club**

Monthly, last Friday in the month

For more information, speak to Janet G

### **Knitting Group**

Monthly on a Monday morning

For more information, contact Di via the church office

### **Prayer**

FOCUS, Tuesdays, 8:00pm: every 2nd Tuesday of the month meet in the chapel, all other Tuesdays meet on Zoom (for log-in details, contact the church office)

Prayer for Children & Youth, term-time, Thursdays, 3:00pm

Hour of Prayer, Fridays, 10:00-11:00 am

### **Toddlers (term-time)**

Thursday mornings, 9:30–11:00am

## Introducing St Luke's New Curate

*On 3rd December, our Vicar, Michael, announced that Tolu George, currently Ordinand at St Luke's, will be our Curate following her ordination at St Alban's Abbey on Sunday 30th June 2024. Tolu is supported by her husband, Leke, and three children, and is currently training for the ministry at St Mellitus College in SW London. The news was met with applause from the congregation.*



### Reflections on my calling to ordained ministry

I felt the call to ordained ministry in 2009 while living in London. I wanted to continue my training as a human rights barrister but I felt the gentle hand of God calling and leading my heart towards the marginalised and vulnerable within and outside the church. In that time, I was being formed, and my ambitions as a barrister were offered up as a sacrifice to God. God has used my skills for 'de-mything' the gospel, advocacy and prophetic imagination to help me discern my calling to ordained ministry.

I am grateful to all those who have prayed with me as I discerned my call to ordained ministry; I am thankful to Revd James Webster who made the phone call and encouraged me to explore ordained ministry in the diocese.

I am thankful to Revd Michael Norman for inviting me to spend my placement and, in turn, to serve my curacy with him. I am learning the rhythm and routine of life as a parish priest.

The community at St Luke's have taken my family into their hearts with prayers, encouragement and gracious feedback. We are blessed to be amongst you all.

I wish to thank Archdeacon Charles, Bishop Jane, Bishop Richard and Bishop Alan, who have allowed me to serve and share my gifts with the people of St Albans Diocese.

I look forward to growing in my discipleship to Christ and engaging with my priestly calling within the body of Christ, and to serving and learning together as a community, worshipping alongside you, and proclaiming the gospel amongst you all on the Cassiobury Estate and nearby.

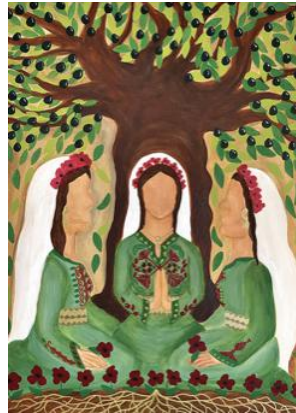
God bless you all,  
***Tolu George and family***

## World Day of Prayer

"I beg you, bear with one another in love"

**Friday 1st March 2024, Scroll Church, 2:00pm**

The World Day of Prayer service was written by Christian women in Palestine, well before the present Israel-Gaza war broke out.



The local Watford committee, led by the Scroll Church, who meet at North Watford Methodist Church, are organising this year's service and warmly invite you to join with Christians across the whole Watford area. If you live further afield, you may find there is a service nearer to your home which you can attend.

*Mary Bowen*



## Wycliffe Hall are Back Again

Just before Easter two years ago, a group of around 10 people from Wycliffe Hall, including a tutor, joined us at St Luke's for nine days of Mission. It was a great time: people were encouraged in their faith, we undertook prayer visiting in roads in our community, and put on events to encourage people after the Covid pandemic, such as a refresh evening for key workers, and reached out to various groups, including people from other cultures, men, and our young people.

From 9th to 17th March, a Wycliffe Hall team of 9 will be joining us. We are looking forward to having them with us, being encouraged by their visit and having their help as we reach out to our parish.

Details of events will be published soon but for now can I ask you please to:

- **Pray** for this Mission, especially for protection (last time Covid caused havoc but God provided wonderfully).
- **Get involved.** Come to the special events and support the team if you can.
- **Join the Prayer Visiting team.** We will be visiting roads in the parish with team members. Consider joining the training sessions on this important form of outreach.
- If you run a group at St Luke's, **invite a team member** to come along to encourage your group.

### What is Wycliffe Hall?

It is a Church of England Theological College, established in Oxford around 1870, where men and women train for the Ordained ministry. It is also a private Hall of Oxford University where students can study for a Theology degree. It is in the openhearted evangelical tradition of the Church of England. I trained at Wycliffe in the 1980s and every year we went on a mission to parishes just before Easter. This tradition continues today. We will be welcoming six people training for ministry, one Theology student, one PhD engineering student and a tutor from Wycliffe Hall.

*Michael  
Vicar of St Luke's*





## Bishop of St Albans Open Garden

The Bishop of St Albans will be opening his garden on four Sundays in February and March for people to come and look at the display of snowdrops. Those who came to visit in the summer will know that the garden is delightful and it will also appeal to visitors in the spring as the snowdrops herald the end of winter.

The two acres of garden are an oasis in central St Albans and only open to the public on selected Sundays in the spring and summer.

Spring opening days are 18 and 25 February, 3 and 10 March. Entrance is £5 per person (children free) and dogs on leads are welcome.

Footwear suitable for the time of year is advised.

All money raised will be donated to the Beds and Herts Historic Churches Trust.



# mission week needs you!

9TH MARCH - 17TH MARCH

Chandler's Cross  
Cassiobury Park  
**WATFORD**

SEE WHITEBOARD IN GATHERING AREA FOR  
THINGS TO DO AND SIGN UP TODAY



WITH  
WYCLIFFE  
HALL

SOMETHING  
GOOD?

SOMETHING  
GOOD!

PSALM 34:8



## Stadium Sleep Out 2024

A poster for the Dreams United Stadium Sleep Out 2024. The background is a night-time photograph of a stadium with bright floodlights. The text 'Dreams United: Stadium Sleep Out' is in large, bold, yellow letters. Below it, 'Watford Community vs Homelessness' is in white. A yellow location pin icon is next to 'Watford FC's Vicarage Road Stadium'. Three yellow calendar icons show the dates '01', '03', and '24'. At the bottom, logos for 'COMMUNITY SPORTS & EDUCATION TRUST', 'In partnership with ...', 'NewHope', 'YMCA', and 'hyh Herts Young Homeless' are displayed. A 'WELCOME TO VICARAGE ROAD' sign is visible in the background.

**Dreams United:**  
**Stadium Sleep Out**

**Watford Community vs Homelessness**

Watford FC's Vicarage Road Stadium

01 03 24

COMMUNITY SPORTS & EDUCATION TRUST  
In partnership with ...  
NewHope  
YMCA  
hyh  
Herts Young Homeless

### St Luke's Youth are joining the Dreams United Sleep Out at Vicarage Road Stadium

On the night of Friday 1st March we will be swapping our warm cosy beds for a sleeping bag out in the open! This event is to raise awareness of the number of people facing homelessness in Watford and the surrounding districts and raise funds to go towards combatting homelessness.

We will be looking for sponsorship as we undertake this challenge; proceeds from the event are being split between New Hope, One YMCA, DENS, and Herts Young Homeless. We will particularly be asking for sponsorship after the service on 11th February and at the same time Urban Saints will be holding a bake sale to help us.

***St Luke's Youth***

## Money Matters

Thank you for all of you who are regular givers at St Luke's.  
Five questions for the New Year:



- 1 Have you been increasing your giving in line with inflation?
- 2 If you are a taxpayer, have you Gift Aided your giving?
- 3 Are you paying regularly by monthly standing order or online payment?
- 4 Have you considered giving a 10% tithe to the church?
- 5 If you don't give yet, can you please consider prayerfully and set up a regular standing order to support your and our church?

Thank you

**Martin Kirk**  
*Treasurer, St Luke's*

**If you would like to give to St Luke's by bank transfer, the details are:**

Account name PCC St Luke's Watford

Sort code 20-91-79

Account no. 70687472

Reference Please state if the donation is for a specific appeal,  
eg Santa's hampers, Foodbank, etc.

**Please remember to complete a Gift Aid form if you are a tax payer**

## Friday Club Tea Parties 2:30pm at St Luke's

**Feb 23rd**

**Mar 22nd**

**Apr 26th**

*Now all you people  
At work bench and sink  
Stop all your business  
Have time to think.  
Who else on his birthday  
Is put back in a cot  
That was only part one  
Now read the lot.*



## **Peter George Forester 22/8/50–18/11/23**

On 18th November 2023 my lovely smiley husband Peter died. Following this, my family and I experienced the love and joy of being part of a church family. We were given so much love and support by our church family at St Luke's.



On 6th December we had the celebratory funeral service for Peter at St Luke's. The family and I are so grateful to our church family for all they did to make this such a wonderful occasion. We are grateful to Michael, Jeremy H and Melanie Sills and my friend, Josephine Appleby, for the wonderful service of thanksgiving for Peter's life and to the many members of our church family who set up the hall for the wake, served tea, etc. and cleared up afterwards.

It was a wonderful celebration of Peter's life and for which I thank God for our 52 years together, our 4 children and 6 grandchildren and for our wonderful church family and friends.

I would also like to share two quotes from our grandsons:

Isaac, 8, during his bedtime time prayers said shortly before Peter's death that he was sorry that Grandad Peter was taking so long to get better. Our daughter Jessica said to her husband Andy later that she didn't want Isaac to be under the illusion that Grandad would get better. Nathaniel, 10, overheard and said, "Yes, he will. When he goes to Heaven, he will be better".

After being told that his Grandad had died Isaac said, "Now Grandad will be with us every Christmas, looking down from Heaven".

The simple faith of children is so encouraging to us all.

***Margaret Forester***

## 74th Watford South Scouts

Scouts are do-ers and give-it-a-go-ers. Yes, we go camping, hiking, swimming, abseiling, cycling and canoeing. But, we also get to hang out with our friends every week – having fun, playing games, working in a team and taking on new challenges.

Every week we give our young people the skills they need for school, college, university, the job interview, the important speech, the tricky challenge and the big dreams: the skills they need for life.

Everyone's welcome at the 74th Watford South Scouts. Regardless of your young person's physical ability – there's a Scout adventure out there waiting for them. And we'll help them find it.

Please follow the QR code on our advert on page 26 to sign up your child for his or her next adventure.

*James Harvey,  
74th Watford South Scout Leader*



## SERVICE TIMES

**Sundays 10:30am**

Morning Worship (In person & live streamed)  
&

**5:30pm Encounter**

Informal Worship (In person)

**Tuesdays 10:00am**

Holy Communion (In person)

## Some Highlights from Christmas 2023

Carol Singing at the Essex Arms – CanCC and church members



Carols by Candlelight Service – Choir and Recorder Group



Tolu and the Giant Christingle on Christmas Eve

## **Watford Philharmonic Performance of Elijah**

Come and hear the wonderful story of Elijah as written in the Old Testament book of *1 Kings* set to glorious music by Mendelssohn.

St Luke's members Alison, Andrew, Mary and Philip will be in the chorus.



WATFORD  
PHILHARMONIC

Watford Philharmonic Choir and Orchestra presents

**MENDELSSOHN**

# **Elijah**

**Saturday 23rd March 2024 7pm**

**The Grand Hall**  
Bushey Arena, London Road, Bushey WD23 3AA

Box Office: [www.watfordphilharmonic.co.uk](http://www.watfordphilharmonic.co.uk)  
[www.trybooking.co.uk/CUVB](http://www.trybooking.co.uk/CUVB)  
tel: 07843 192016



Tickets: £20 under 19s £5 (unreserved seating)



## News from some of our Mission Partners



Dear friends,

Warm greetings from Malawi, where Blantyre at least is looking very green, in the middle of the rainy season. It's heartening to see some fields of maize growing well. At the same time I'm aware that many people are in a 'hungry season' before the maize is ready to be harvested.

Christmas is a time when I particularly miss being in the UK and with family, so it was good to be able to spend time with others here, especially my neighbours the Richter family. On Christmas Eve, I had the privilege of preaching in my local church, the Chilomoni congregation of the Africa Evangelical Church, and I enjoyed the service. The Sunday School put on a nativity play and formed a choir to sing 'Joy to the World' which was fun to watch.

I wonder how you brought in the New Year? I have found *Psalm 37:5* in the *New Living Translation* helpful as I look forward:

"Commit everything you do to the LORD. Trust Him, and He will help you."

At the start of a new year I like to take time to evaluate and plan, and it was good to have some reflection space. Then everything started up again and has been quite non-stop! This year I'm praying for wisdom in making choices so that I can focus on key areas. One of those areas will be Creation Care and Christian Mission (and linking this into theological education). The Advanced Short Course on this that I'm doing at All Nations started last week, and is proving to be stimulating. It will help



me to think through a response to the local situation at Michiru mountain. We had a walk there over the holiday, and although I was thankful to find that I can still follow my normal trail, it was sad to look up to the top of the hill and to see unsustainable logging for charcoal continuing.

In January I visited the Evangelical Bible College of Malawi (EBCoM) to follow through on

conversations started when I presented my report as Educational Advisor. I was glad to grow my relationships there as I spoke at a Chapel service and led one of the morning devotions.

This year will see me coming to the UK for a home assignment from late July onwards. Rather unexpectedly, I also visited the UK at the end of January for a short time for a medical check-up (which I had initially thought would take place later in the year) but continued much of my normal work during the visit.

### **Summary of prayer points**

- Give thanks for good times with people over the Christmas period.
- Give thanks for the All Nations course on Creation Care.
- Pray for wisdom in making choices so that I'm able to focus well.
- Pray for EBCoM students and staff at the start of their academic year, that this year will be one of spiritual growth as well as growth in knowledge and skills.
- Pray for safety in travel.
- Pray for the government of Malawi to effectively tackle the challenges the nation is facing.

Thank you so much for your prayerful support.

With love in Christ,

**Ruth Guinness**  
***ruth.guinness@sim.org***  
***P.O. Box 136 Blantyre, Malawi***



19th January 2024

Dear PCC members of St Luke's Church, Watford

On behalf of the Trustees of the Rafiki Thabo Foundation, I would like to thank you so much for your recent generous donation of £750.



In 2023, thanks to the generous support of so many individuals, groups and organisations, including the congregation of St Luke's, we supported an incredible 374 children and young people through our scholarship programme, of which 44 are living with a disability – a record for us!



We also continued to provide school meals to the most vulnerable children at Kamuganguzi Janan Luwum Memorial Secondary School in Uganda – the very school that St Luke's has raised money for through appeals to build teachers' accommodation and renovate the main hall. We also constructed a girls' dormitory at another school in the same area of Uganda and provided the girls with bunk beds, and continued to support Ha Fusi school in Lesotho to enable them to become a High School and offer an additional two years of education to local children.

In addition, we continued to work with partners in Kenya to deliver specific projects to remove the barriers to education for children living with disabilities. Projects included working with the Autism Society of Kenya (ASK) to roll out the very successful programme to train parents and caregivers of children with autism to Mu'anga County in Kenya to enable them to provide therapy themselves rather than needing to pay external therapists to do so; and supporting Dadashi Children's Centre to move towards full financial sustainability. In 2023 we established a skills training centre for the mothers of children with disabilities who use the Centre, in order to provide them with skills to gain a much needed income.

God continues to bless our work so richly and we are excited to see what we can achieve, together, in 2024! Thank you so much for your ongoing support for our work – it makes such an incredible difference to so many young lives in Africa.

Yours sincerely,

**Janet Hayes**  
***Director, Rafiki Thabo Foundation***



### **Open Doors, 2024 World Watch List Launch**

Thank you very much to everyone who wrote Christmas cards to Dean Russell, the Watford MP. I visited the Watford Constituency Office to drop off 21 Christmas cards from 26 members of St Luke's Church Watford, 23 of whom were Watford constituents.

Along with their Christmas greetings, most of the people who wrote a card also requested that Dean Russell or a team member might be able to attend the launch of the Open Doors, 2024 World Watch List in the Attlee Suite, Portcullis House, House of Commons, at 3pm on Wednesday 17th January.

Dean's Chief of Staff kindly replied by email to say that Dean had a diary clash with a meeting that he was chairing. He did say that Dean might be able to drop in quickly as both meetings were in nearby locations.

Open Doors records show that Dean wasn't at the launch but 99 MPs did attend. So although Dean wasn't there, he and his team are aware of the work of Open Doors and the plight of the persecuted church. I am encouraged by the email responses from Dean's Chief of Staff and I hope to meet with Dean during February or March.

I will soon be ordering copies of the World Watch List, and will also order a large map to replace the 2023 version on the Partners in Mission notice board in the car park corridor at St Luke's.

The main 'highlights' from the 2024 World Watch List are the increase of persecution in North West Africa, autocratic governments increasing their control and violence from Hindu nationalists.

If you'd like to know more about the World Watch List and the persecuted church you can visit [www.opendoorsuk.org](http://www.opendoorsuk.org). You are also welcome to talk with me, or contact me on 0777 999 1551 or 01923 350596, or email me at [john@petermagnusdesign.co.uk](mailto:john@petermagnusdesign.co.uk).

*John Williamson*

### Questions from the Open Doors fund-raising quiz set in Autumn '23 for those who haven't yet tried it (Answers on p 33)

#### ***Something that has doors:***

- |  |   |
|--|---|
| 1. A bird pops out of here on the hour (6,5)   | 20. Sea by eyelid pencil! (5,5)               |
| 2. Elsa fell inside (4)                        | 21. Not on frozen water (6)                   |
| 3. Heathery upland reversed (4)                | 22. Actors on very shaky ground (12)          |
| 4. Large place for the sick (8)                | 23. What couch potatoes do around (6)         |
| 5. Operations and entertainment done here (7)  | 24. E.g Core, Sketch and Story (11)           |
| 6. C of E worship place (6)                    | 25. Nicholas the actor? (4)                   |
| 7. A bung owl released (8)                     | 26. Little place for little people (5,5)      |
| 8. Kind of music (6)                           | 27. Evidence of injury - not super (3)        |
| 9. Where learning takes place (9)              | 28. Manifesto we ran is hidden (5)            |
| 10. Inverted Umbilicus less the French (3)     | 29. Eating place in the home (6,4)            |
| 11. What some dogs and snakes do (4)           | 30. Furniture on the face? (10)               |
| 12. E.g. Gryffindor                            | 31. Kinetic brands go with a bang (6,7)       |
| 13. This tyre would force a stop (4)           | 32. Dob someone in or inform on (4)           |
| 14. A typewriter has one (8)                   | 33. Found on the Headrow in Leeds (4,4)       |
| 15. Receptacle held by those in charge (8)     | 34. Telegram vehicle? (5,3)                   |
| 16. German Wolkenkratzer                       | 35. Tube Transport (10,5)                     |
| 17. An echo tells us a sound was made here (5) | 36. Rook (6)                                  |
| 18. Found on the golf course (6)               | 37. A place rearranged (6)                    |
| 19. Broom Oriel used was broken (6,4)          | 38. Kind of cheese (7)                        |
|  | 39. Undergarment attempt - one less time! (6) |
|  | 40. Remove ET and drinks from clue 31 (5)     |

## Forthcoming Fairtrade Events



**Fairtrade Lunch** cooked by students at Watford College.  
Thursday 14th March, 12 noon. To book, tel 01923 812464.

**Fairtrade Quiz Night** at St Luke's. Saturday 20th April. Details to follow.

**Fairtrade Fortnight**, 9th-22nd September.



**CanCC**

Cassiobury  
and nearby  
Community  
Choir



**Wednesdays from 8pm**  
**@ St Luke's Church, Watford**

**Anyone welcome of any musical ability to join.**

**Feel free to turn up on the night, or contact**  
**[music@stlukeswatford.org](mailto:music@stlukeswatford.org) 01923 246161**



## Stay connected

To learn more about services, Our LifeGroups  
and other church activities you can take part in, email the office  
to get the weekly email sent on Fridays

## Creative Space

In November we had a wonderful Christmas time at Creative Space – preparing decorations and cards while we enjoyed friendship, a warm welcome and lots of chatting. Ceramic candle holders, snowmen and santas were painted, wooden wall decorations were glittered and coloured and sweet little cards were made with cheerful Christmassy material and



buttons. Then, with Jesus being the centre of it all, little hanging decorations of the baby Jesus were created – each unique to its creator.

Creative Space is for hard-working women and we have a full programme already planned for 2024. So if you have friends who are not in the church – women of all ages, including accompanied teens – spread

the word as there are lots of opportunities to get together this year. Our advert on page 28 gives a flavour of what's to come and all the information you need. But you will need to book your place!



*Pam Norman*

## ESTHER THE PLAY WITH SONGS



Saturday 17th February  
2.30pm at  
St Luke's Church

Tickets £3 each or £10 for a family. Tickets on the door £5

Refreshments included. Tickets available from  
St Luke's office and on Sunday mornings





**BEAVERS**

Ages 6-8  
Mondays 5-6pm

**cubs Scouts**

Ages 8-10.5  
Mondays 6-7.30pm

Ages 10.5-14  
Mondays 7.30-9pm

## 74th Watford South Scouts St Luke's, Langley Way

Scouts are do-ers and give-it-a-go-ers. Yes, we go camping, hiking, swimming, abseiling, cycling and canoeing.



But, we also get to hang out with our friends every week – having fun, playing games, working in a team and taking on new challenges.



**Sign up with the QR code to help your young person discover their 'thing': from archery to coding to performance art and everything in between.**

For enquiries please email  
[devansscoutleader@gmail.com](mailto:devansscoutleader@gmail.com)



## Santa's Hampers

In February last year we were delighted to receive a letter of thanks from the Watford and Three Rivers Refugee Partnership, for the 40 hampers we provided in December 2022 for families seeking help. In total, 77 hampers were provided in Watford, but the number of people seeking help continues to increase. Giving gifts at Christmas remains so important – it shows that we care for those much less fortunate than ourselves.



The Santa's Hampers' WhatsApp Group was therefore pleased to welcome Fiona in September and announce that this year we were going to provide 50 boxes. So with that news the shopping list was displayed and we were back in action.

We communicate via WhatsApp to share goods we have been able to buy, best prices, suitability, etc. It all comes together, eventually, but it can be challenging as some shops only allow us to buy limited quantities

at one time. For example, the hairbrushes were sourced in three different towns, the final seven coming from Boots in Macclesfield!

### St Luke's Refugee Santa's Hampers Shopping List

<b><i>For every box</i></b>	Jam
Box of biscuits	Toothbrushes
Tub of chocolates	Toothpaste
Shower gel	Tampons
Shampoo	Hairbrush
Vaseline	Christmas card
Tinned peaches	Christmas decoration?
Pringle pot	Notepad & pen?
Soap pack	<b><i>Distributed according to family size</i></b>
Male deodorant	Assorted games and toys
Female deodorant	Assorted books
Flannels	Jigsaws
Hot chocolate	
Box of tissues	

Finally, on 7th December we brought everything together at St Luke's. We squeezed as much as we could into the lift and took it upstairs ... several times. We were so grateful for the cakes and sandwiches provided by Margaret.

At 6:30pm the youth team gathered in the room upstairs, together with some additional very young and willing helpers and we were guided through the packing process. With this

help, the packing was finished in record time. When those 50 boxes were sealed, jam-packed with gifts, we all breathed a sigh of relief!

Same time next year? You bet. We need a team ... an even bigger team! If you would like to join us, you would be so very welcome.

Thank you for your donations and may the New Year bring you peace, joy and happiness.

*Jill Rogers*



## **CREATIVE SPACE FOR**



### **HARD-WORKING WOMEN**

# **COME JOIN THE FUN!**

**Monday 12th February, 7:30-9.00pm**  
COMMUNITY PROJECT – Tree Banner  
Informal Bring & Share Craft and Chat (FREE)

**Saturday 16th March, 9:30am-noon**  
Portrait Painting & Stone Painting  
Bring a colour photo to paint (£6 + donation for breakfast)

**Payment is by cash only on the day**  
To book your place at the next event, contact Pam:  
Tel 07975 748243; Email [pam.stlukes@gmail.com](mailto:pam.stlukes@gmail.com)



## Breakfast Club

Breakfast Club (8:30-10:00am on alternate Saturdays) is slowly growing into the community we have been praying for!



Families from every corner of Watford (and some from beyond!) are gathering to eat, play, chat, and share life. It's a place where table tennis balls are smashed, chess games are pondered, Hama beads get ironed, and Alpha discussions are continued.

We would love to have a few more volunteers from the St Luke's to get stuck in – not necessarily to help in the

kitchen – but to mingle and chat, engage, and play!

A huge thank you to all who already help to make it such a wonderful start to the weekend and for those of you who cover us in your prayers. We are an outreach group so any prayers you can spare will make all the difference.



*Lydia Davies*

*Children & Family Team Leader*



## URBAN SAINTS

Tuesdays 6:15pm - 7:30pm in Church Hall

7-11 year olds





## One YMCA Watford Residents' Lounges Makeover

**Extract from a newsletter issued by One YMCA Watford on 8th December 2023**

Chaplaincy Team Leader, Matt Penny, led a group of enthusiastic volunteers to make our Watford Hostel Residents Lounges feel like home and our entrance area bright and welcoming!



The newly decorated Residents Lounges

Thanks also to our volunteer Chaplains, especially Paul, Gerry and Robin for keeping us all going with cups of tea, friendship, detailed decorating and laughter.

Plus... all our hostel residents and colleagues who lent a hand with real passion and joy, always a good time to work together as a team."

***One YMCA Communications***

Matt said: "Massive thanks to ... B&Q St Albans for giving time, decorating materials and sharing their expertise. The walls have never looked so bright.

A big shout out to all our Church friends, we felt so blessed. We couldn't have done it without your financial, prayerful and dedicated practical support! Much love to Beechen Grove Baptist, Wellspring Church, Churches Together, Watford Church of Christ, West Watford Free Church, Christ First, St Luke's and Watford Town Centre Chaplaincy.



Some of the decorating team with our very own Paul R, 2nd from left

## LADIES CAMEO CLUB

### Winter/Spring 2024 Programme

#### February

Friday 9th

7 for 7:30pm

Church Lounge

**Watford's**

**Street Angels**

Cameo + event

Talk by Geert Tap,

Watford Town

Centre Chaplain

Refreshments at 7pm

#### March

Friday 8th

7 for 7:30pm

Church Lounge

**Andy & Cathy Coomar**

**from Face2Face**

**Christian music group**

Evening of inspiring

music and chat

#### April

Friday 12th

10:30am

Meet in car

park, St Luke's

**Trip to Carpender's**

**Park Garden Centre**

Cameo + event

Lunch in the

*Evergreen Restaurant*

**Bring your friends and neighbours!**

For more information, email: Jos (jocelyn\_lawrance@hotmail.com)  
or Pam (pamela.willis@btinternet.com)

*Cameo + events = men are welcome too*

**Donation for Club evenings - £4**

# Urban Saints

cake and cup-cake sale



Donations to  
new hope  
to raise sponsors  
for the sleepout



**SUNDAY 11th FEB 11:30am**

## Open Doors Quiz Answers

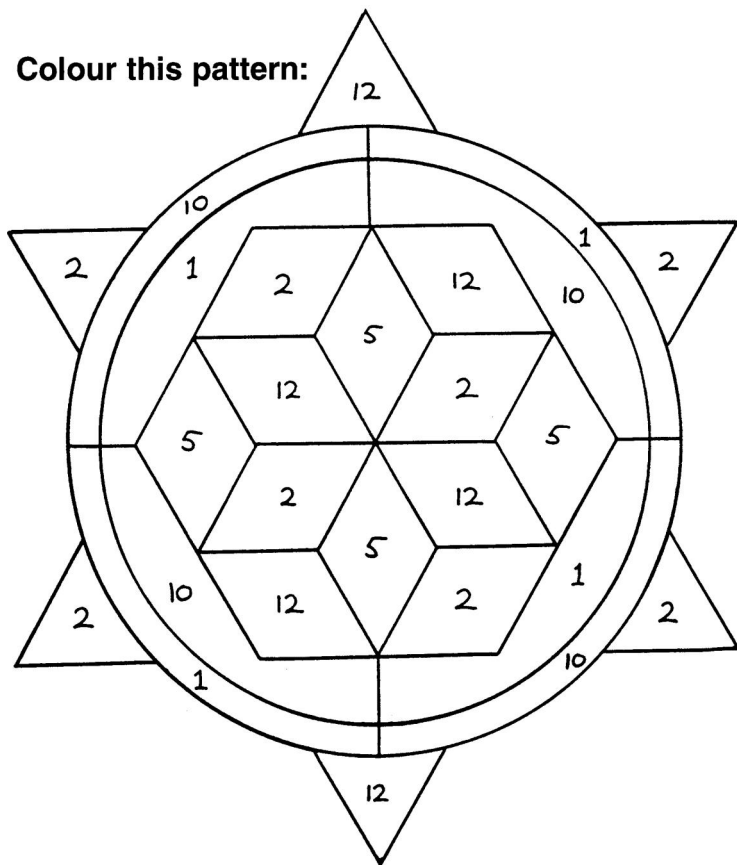
- |                           |                  |                                |
|---------------------------|------------------|--------------------------------|
| Something that has doors: | 14. Carriage     | 29. Dining room                |
| 1. Cuckoo clock           | 15. Cupboard     | 30. Sideboards                 |
| 2. Safe                   | 16. Skyscraper   | 31. Drinks cabinet             |
| 3. Room                   | 17. Hotel        | 32. Shop                       |
| 4. Hospital               | 18. Bunker       | 33. Town hall                  |
| 5. Theatre                | 19. Boiler room  | 34. Cable car                  |
| 6. Church                 | 20. Ocean liner  | 35. Underground train          |
| 7. Bungalow               | 21. Office       | (NOT COUNTED as numbers wrong) |
| 8. Garage                 | 22. Conservatory | 36. Castle                     |
| 9. Classroom              | 23. Lounge       | 37. Palace                     |
| 10. Van                   | 24. Restaurants  | 38. Cottage                    |
| 11. Shed                  | 25. Cage         | 39. Vestry                     |
| 12. House                 | 26. Dolls house  | 40. Cabin                      |
| 13. Flat                  | 27. Car          |                                |
|                           | 28. Tower        |                                |

## Christmas Quiz Answers

- |  |  |
|--|--|
| 1. O holy night                        | 21. It's beginning to look a lot like Christmas    |
| 2. Santa Claus is coming to town       | 22. Santa tell me                                  |
| 3. I saw three ships                   | 23. Winter wonderland                              |
| 4. Holly jolly Christmas               | 24. Oh come, oh come Emmanuel                      |
| 5. O come all ye faithful              | 25. All I want for Christmas is my two front teeth |
| 6. Feliz Navidad                       | 26. Angels from the realms of glory                |
| 7. Good King Wenceslas                 | 27. Rocking around the Christmas tree              |
| 8. Candlelight carol                   | 28. See amid the winter's snow                     |
| 9. Shepherd's pipe carol               | 29. The first nowell                               |
| 10. Ding dong merrily on high          | 30. Carol of the bells                             |
| 11. The snowman                        | 31. Shake Santa shake                              |
| 12. Hark the herald angels sing        | 32. Sussex carol                                   |
| 13. Baby it's cold outside             | 33. Away in a manger                               |
| 14. While shepherds watched            | 34. The twelve days of Christmas                   |
| 15. In the bleak mid-winter            | 35. Driving home for Christmas                     |
| 16. Do they know it's Christmas        | 36. Frosty the Snowman                             |
| 17. Last Christmas                     | 37. We wish you a merry Christmas                  |
| 18. The holly and the ivy              | 38. Silver bells                                   |
| 19. Chestnuts roasting on an open fire | 39. The Coventry carol                             |
| 20. Silent night                       | 40. Greatest time of the year                      |

# Children's Page

**Colour this pattern:**



The number of disciples = BLUE (Matthew 10: 1–4)

The number of loaves which fed 5000 people = RED  
(Mark 6: 30–44)

The number of fishes which fed 5000 people = GREEN  
(Mark 6: 30–44)

The number of lepers in a group healed by Jesus = YELLOW  
(Luke 17: 11–19)

The number of lepers who thanked Jesus = ORANGE  
(Luke 17: 11–19)



# TODDLERS AT ST LUKES

**THURSDAY  
MORNINGS  
9:30 - 11AM**  
in the church hall



**Donation at the  
door:**

£1 per adult  
50p per child

free tea and coffee  
but bring your own snacks

for more information talk to Lydia at [children@stlukeswatford.org](mailto:children@stlukeswatford.org)

## Alternate Saturdays

**8:30 - 10 AM**

Bacon, Vegan Sausages, Pastries, and Cereal  
Table Tennis, Mini Snooker, Board Games, Crafts, and Fun!



All pre-school  
and primary  
school families  
welcome!

**FREE!**

9th Dec  
13th Jan  
27th Jan  
10th Feb  
24th Feb  
9th Mar  
23rd Mar

You are welcome to submit an article for the next edition of St Luke's News which should be no more than 450 words. We may edit articles for clarity.

Please email articles to the Church Office: [office@stlukeswatford.org](mailto:office@stlukeswatford.org)

If you wish to receive St Luke's News regularly, either delivered to your door or emailed, please contact the Church Office (246161). Large print is also available. Alternatively, please let us know if you no longer wish to receive it.

The magazine appears on our website, [www.stlukeswatford.org](http://www.stlukeswatford.org)

Vicar	Michael Norman
Readers	Dave Clarke
	Pam Norman
	Wendy Somerville
Reader in Training	Simon Trundle
Ordinand	Tolu George
Music Director	Jeremy Cooke
Youth Director	Neil Brookes
Children & Family Team Leader	Lydia Davies
Administrator	Beth Burns
Worship Leader and Media Administrator	Jeremy Hogarth
Church Wardens	Susan Miller
	John Williamson
PCC Lay Chair	Richard Waddington
PCC Treasurer	Martin Kirk
PCC Secretary	Vacancy
Safeguarding Officer	Mary Bowen

Please leave a message for any of the above on the Church Office answerphone – 01923 246161

Website      [www.stlukeswatford.org](http://www.stlukeswatford.org)

Email      [office@stlukeswatford.org](mailto:office@stlukeswatford.org)